

# MARITIME BRIDGE LINE



*Official Newsletter and Tournament Schedules of the Canadian Maritime Unit 194 and Acadian Unit 230 of the American Contract Bridge League*

Volume 25 Number 2

MAY, 1996

## ALERT PROCEDURE IMPROVED

**EFFECTIVE JUNE 17, 1996**

With the new Alert procedure as with the old, timing is not everything. However, the moment chosen to Alert the opponents is important.

**Pre-Alert:** The pre-Alert exists as a means to inform your opponents about methods which may require some preparation and discussion. After being informed prior to the start of the auction, the opponents may require a moment or two to prepare to play against pairs that open the bidding on nothing more than air and charm ( 8 or 9 points) or in certain events use methods like the multi-two diamonds. Everyone wants to do well. In bridge we want to do well because of our skill and normal playing luck, not because the opponents are surprised.

**Delayed Alerts:** Your opponents should have an inkling that certain calls might have some non-natural meaning or interference. That's the idea behind delayed Alerts. For some calls, there is no real "need to know" during the auction ( constructive entrance into the auction is rare), but knowledge may be necessary for defence. In fact, Alerting this type of call at the time it is made is sometimes (though inadvertently) an aid to the Alerting pair.

The delayed-Alerts are ace-asking (control - asking) calls and Alertable calls above 3NT starting with the opening bidders rebid. The declarer or dummy notifies the opponents prior to the opening lead. The appropriate defender informs declarer after the opening lead and prior to declarer playing from dummy.

Timely information during the auction will now be transmitted in two ways, Announcing and Alerting.

**Announcing:** Three bidding methods have become common. When these methods are Alerted players often fail to ask because the assumption is that the common method is being used. To clear up this ambiguity and to perhaps speed up the game, a new approach to informing the opponents will be used.

When playing these methods with oral bidding, your partner will ANNOUNCE your method with a one-word definition. When using bidding boxes, your partner will tap the Alert Strip (or use the Alert Card) in addition to ANNOUNCING the method.

These three common bidding methods are:

1. 2D response to 1NT showing hearts and a 2H response to 1NT showing spades on an auction of 1NT - pass - 2D or 2H.

Partner of the 1NT opener will say "TRANSFER" and with bidding boxes also tap the Alert Strip. Note that this method is only used when there is no interference.

2. A response of 1NT to a 1H or 1S opening that is forcing for one round. Partner says "FORCING" and, if using bidding boxes, also taps the Alert Strip. Once again, this method is only used in a "clean" auction - no interference.

This same method will be used for the semi-forcing 1NT response by an unpassed hand to one of a major in clean auctions. Partner will announce "SEMI-FORCING" and if using bidding boxes, also tap the Alert Strip.

3. The range of the 1NT opening bid or overcall will be announced if it does not fit within the range of 15 - 18. The partner of the notrumper states the appropriate range aloud - "12 - 14", "13 - 16" or "10 - 12". If the range is between 15 - 18, nothing is said. If the notrump is conventional, the partner says "Alert". (continued on Page 2)

## ALERT PROCEDURE (continued)

For other notifications during the auction, the word "ALERT" will be used (When bidding boxes are in use the Alert Strip will be tapped also). There have been some changes in the methods that require a during-the-auction Alert.

Definition of "NATURAL":

Any offer to play in a suit for the first time: showing

1. 3+ for minors
2. 4+ for majors
3. 4++ for overcall
4. 5++ for Weak 2
5. 6+ for Weak 3

A notrump opening or overcall is considered natural if it is not unbalanced (generally, no singleton or void and only one or two doubletons).

In general natural bids should not be Alerted unless they have very unusual meanings. Example:

1. 2/1 forcing to game will no longer require an Alert.
2. The response of 1H or 1S to 1C which may bypass a longer diamond suit will no longer require an Alert.
3. A two of a minor rebid which may only be a three card suit after a Forcing or Semi-forcing NT response is not an Alert.
4. A bid of 1S showing 5+ spades in an auction of

**1C or 1D - 1H - 1S**

will no longer be Alerted.

5. There has been one dramatic change which should significantly decrease the number of Alerts. A non-penalty double, showing at least one unbid major (if there is one) after an opening bid in a suit at the one level has been overcalled with another suit at any level (most probably through 3S), **WILL NOT require an Alert**. However, on the same auction, if the double is penalty or a type of double that is not the expected negative double, an Alert **WILL BE** required. On an auction such as; 1C - 1S - Double, 1D - 2H - Double or 1D - 2C - Double, the opening bidder will say nothing if the double tends to show or guarantees the other major. If the double is penalty, just shows values or controls, or something else, the word "Alert" will be used.

6. Alerting of cuebids has been clarified and simplified as follows:

- a. Most cuebids will not be Alerted.
- b. Very unusual meanings will be Alerted.
- c. Offering to play in a suit that has been

**NAMED** naturally by an opponent will be an Alert.

Examples: 1D - 1H - 2H,

If this is a random strong hand, limit raise or better in diamonds, or a request for NT with a heart stopper, then no Alert.(a).

If this is played to show long clubs with a weak hand, then Alert.(b).

If this shows long hearts and suggests hearts as a contract, then Alert.(c).

As you can see from these examples, the number of times a cuebid will require an Alert is small. However, in the rare instance that a cuebid or simple negative double is Alerted, opponents should **ASK and NOT ASSUME**.

Please remember that our game **REQUIRES FULL DISCLOSURE**. The Alert Procedure still requires you to try to make sure that the opponents are aware of your methods. One example that may clearly convey the intention of the Alert Procedure is as follows:

If you were to decide to play strong natural opening two-bids at the local duplicate club at which you had been playing weak-twos, you would want to inform you opponents.

There is a practical limit on the things that you can bring to your opponents' attention. However, everyone's intention must be to keep opponents fully informed. Win and enjoy because of skill, luck, and superior methods, not because your methods are a secret or surprise.

( This article was reprinted from THE DAILY BULLETIN, Volume 39, Number 9 from the Philadelphia North American Bridge Championships, Saturday, March 9, 1996)

**NOTE.** A complete presentation of the Alert Procedure will appear in the May ACBI Bulletin. Please familiarize yourself with it.

The answer to the question "What do I do if I am in doubt about Alerting a call at the table?" is Alert. Later, you can determine the correct procedure to follow for future occurrences. It will be better in the long run to Alert something for which no alert is required than fail to alert when an Alert was necessary.

One thing to keep in kind is the difference in level and experience of opposing pairs - especially as it concerns redress. The greater the difference, the more incumbent it is upon the better - more experienced player/pair to protect himself and to provide more information to the opponents. ☺

# ACBL ALERT CHART

This Chart is a Summary.

|                                      | NOT ALERTABLE   | ANNOUNCEMENT   | ALERTABLE   |
|--------------------------------------|---|--|---|
| NATURAL BIDS:                        | about expected strength and shape   |  | unusual strength, shape or limitations  |
| ARTIFICIAL/<br>CONVENTIONAL<br>BIDS: | Stayman, Blackwood (4NT), Gerber/NT, and those listed below   |  | All other artificial bids.<br><u>*See Delayed Alerts Above*</u>   |
| DOUBLES:<br>1. Type One              | <p style="text-align: center;"><b>IF TAKEOUT</b></p> <p>1. a. Early Doubles with suit(s) bid thru 4♥ with partner inactive</p> <p>      b. The DOUBLE in the following auction, (one of a suit) - (overcall in a suit through 3♣) - DOUBLE, when the double is not penalty and shows at least 4 cards in an unbid major or is for takeout when there is no unbid major.</p> <p>      c. Low-level balancing</p> |  | 1. Doubles listed under Type 1 Non Alertable (1a, 1b, 1c) that are either Penalty(ish) or have unusual strength, shape or other limitations |
| 2. Type Two, ALL other Doubles       | 2. Doubles in auctions other than the ones described in group 1. above that are penalty(ish), including lead directors of suit named  |  | 2. Non-Penalty doubles in auctions other than the one described in a. under non-alertable.  |
| NT OPENINGS:<br>1. 1 NT              | 1. Strong, natural NT openings or overcalls completely within the 15-18 HCP range.  | State range if natural and not completely within 15 to 18 HCP. | 1. Conventional   |
| 2. Higher NT                         | 2. Natural openings or overcalls  |  | 2. Conventional   |

|                           | NOT ALERTABLE   | ANNOUNCEMENT  | ALERTABLE   |
|---------------------------|---|---|---|
| RESPONSES TO NT:          | <ul style="list-style-type: none"> <li>a. Stayman (2♣) asking for four card major and rebids</li> <li>b. Forcing Suit-bids at the three-level</li> <li>c. Natural signoffs of 2♦, 2♥, 2♠</li> </ul>   | <p>State "Transfer" on the following auctions:<br/>           INT - PASS -<br/>           2♦ transfer to hearts or<br/>           2♥ transfer to spades.</p>  | <ul style="list-style-type: none"> <li>a. Stayman (2♣) if other than asking for four card major and rebids.</li> <li>b. Notrump continuations after use of Stayman by responder which do not promise a major.</li> <li>c. Transfers, except for those announced, and other artificial responses above 2♣.</li> <li>d. Non Forcing suit responses at the three-level.</li> </ul> |
| OPENING SUIT BIDS:        | <ul style="list-style-type: none"> <li>a. Natural 2 Bids</li> <li>b. Strong/forcing and artificial 2♣</li> </ul>  |   | <ul style="list-style-type: none"> <li>a. Frequent very light (less than 10 HCP) third seat</li> <li>b. 2♣ if not strong and Forcing</li> <li>c. Canapé System</li> </ul>   |
| RESPONSES TO SUIT BIDS:   | <ul style="list-style-type: none"> <li>a. Non-forcing INT response.</li> <li>b. 1♥ or 1♠ response to 1♣ that may bypass a 4-card or longer diamond suit</li> <li>c. 2/1 Game force</li> <li>d. Neg. or waiting 2♦/ strong 2♣ or 2NT/strong 2</li> <li>e. 2NT/2 level openings asking for clarification</li> </ul> | <ul style="list-style-type: none"> <li>a. State "Forcing" if a INT response to a major is simply forcing</li> <li>b. State "Semi-forcing" if a INT response is simply forcing except when opener has a balanced minimum.</li> </ul> | <ul style="list-style-type: none"> <li>a. INT responses to a major that are not announced such as 1♥-P-INT showing spades</li> <li>b. Non-Forcing suit bids</li> <li>c. Natural Jump shifts not GF and conventional Jump shifts</li> <li>d. Freemptive jump raises</li> <li>e. NF 2NT/1-bid</li> <li>f. INT/1♣ or 1♦ not denying four spades or four hearts</li> </ul>          |
| OPENER'S REBIDS:          | Two of a minor after a forcing INT or semi-forcing INT that could be three cards  |   | INT rebid if strong or may bypass major(s)  |
| OTHER CONSTRUCTIVE CALLS: | Preemptive jump raise/Double  |   | Limit or forcing jump raise over Double   |
| DEFENSIVE BIDS:           | Jumps to 2NT or any 4-level or higher NT bid that is unusual. INT overcall by a passed hand that is unusual.  |   | <ul style="list-style-type: none"> <li>a. Non-Jump Unusual NT</li> <li>b. Very light Overcalls (fewer than 6 HCP)</li> <li>c. Weak Jump Advances</li> <li>d. Jump overcalls which are intermediate or better</li> </ul>   |
| CUEBIDS:                  | Most meanings of cuebids.<br>*See exceptions under Alerts*  |   | <ul style="list-style-type: none"> <li>a. An offer to play in a suit or denomination named naturally by an opponent.</li> <li>b. Very unusual meanings.</li> </ul>  |

# 1996 MASTER POINT RACES

## UNIT 194

### LAGAN TROPHY

|                     |       |
|---------------------|-------|
| 1. RON MACDONALD    | 44.08 |
| 2/3. Balon Buckley  | 36.66 |
| 2/3. Ian Crowe      | 36.66 |
| 4. Boyd Wells       | 35.02 |
| 5. Frank Starzomski | 30.84 |
| 6. Bram Schwartz    | 29.61 |
| 7. Bernie Britten   | 27.66 |
| 8. Joe Currie       | 26.11 |
| 9. David Scammell   | 24.03 |
| 10. Ken Eisner      | 23.54 |

### MCLEOD TROPHY

|                     |       |
|---------------------|-------|
| 1. JO ANN LYNDS     | 22.29 |
| 2. Louise Fisher    | 20.15 |
| 3. Elizabeth Legacy | 19.99 |
| 4. Glenda Hansen    | 18.04 |
| 5. Judy Walker      | 17.61 |
| 6. Myrtle Moulton   | 16.65 |
| 7. Betsy Eisner     | 15.58 |
| 8. Joy Cavazzi      | 15.24 |
| 9. Valerie Best     | 12.95 |
| 10. Elsie Adams     | 12.02 |

## UNIT 230

### SPRINGHILL TROPHY

|                      |       |
|----------------------|-------|
| 1. MIKE HARTOP       | 37.65 |
| 2. Bob Baker         | 26.26 |
| 3. Bill Campbell     | 20.02 |
| 4. Bob Brown         | 17.43 |
| 5. Norman O'Brien    | 17.31 |
| 6. Lynfield Leighton | 17.00 |
| 7. Paul Arsenault    | 16.32 |
| 8. Lyle Wiggins      | 16.02 |
| 9. Joe Austin        | 15.58 |
| 10. Jon Shute        | 15.15 |

### CALLAGHAN TROPHY

|                      |       |
|----------------------|-------|
| 1. ANN HARTOP        | 37.65 |
| 2. Mary Cotter       | 19.24 |
| 3. Evelyn Richards   | 16.79 |
| 4. Carol Forsythe    | 15.50 |
| 5. Ann Posch         | 14.54 |
| 6. Judy Losier       | 10.77 |
| 7. Linda Cobham      | 10.55 |
| 8. Sandy Fox         | 9.51  |
| 9. Marie Carragher   | 9.36  |
| 10. Carmel MacDonald | 8.28  |

## TOURNAMENT TRAIL

This year's frantic tournament schedule has barely gotten underway and already the signs are excellent.

The Sectional Tournament at Clubs started the year off with a bang with a hefty 20% increase over last year.

Greg Homer's efforts in Halifax led to an increase in tables over last year's Halifax Winter Sectional in February.

The Canadian National Team Zone 1

Finals in Amherst drew a total of 14 teams which is higher than the entry for the past several years.

The Don Cox Memorial in Truro had a total of 206 tables an increase of 17 over last year.

I attribute this progress to the increasing efforts of our players to get new players as well as a much more relaxed atmosphere at our tournaments. People seem to be having more fun! This is important as it is the only way that we can bring our favorite game back to prominence.

# 1996 CNTC ZONE 1 FINAL

Amherst Bridge Club Rooms March 30-31, 1996

1. **FISHER** - Ralph Fisher, Louise Fisher, Jon Shute, Bill Halliday 675
2. **CROWE** - Ian Crowe, Balon Buckley, Kathie MacNab, Judy Walker 650
3. **BETTS** - Mike Betts, John Stewart, Eric Balkam, Rod MacKenzie, 645  
Gerry Callaghan
4. **KHAN** - Rashid Khan, Sandra Fox, Bill Campbell, Mary Cotter 621  
Eric Marchand
5. **GHOSH** - Sam Ghosh, Bob Melles, Barbara MacKay, John Earl 575
6. **ANDERSON** - Jim Anderson, Lyle Wiggins, Kim LeClair, Grant Godfrey 564  
Gerry Munt, Miroslaw Kolesiak
7. **EISNER** - Ken Eisner, Betsy Eisner, Boyd Wells, Dave Scammell, 533  
Jo Ann Lynds, Bill Knoll, Jr.
8. **FERGUSSON** - Earle Fergusson, Russell Boyle, Al Millman, Dave Oulton 524
9. **LEGACY** - Ron Legacy, Elizabeth Legacy, Ron MacDonald 498  
Mike Hartop, Ann Hartop
10. **JODREY** - Jim Jodrey, Lyn Leighton, Evelyn Tower, Helen Lawrence 456
11. **MURRAY** - Larry Murray, Winston Samuel, Dave Jackson, Brian Lafferty 445
12. **HYNES** - Edward Hynes, John Steeves, Allen Mitchell, Alice Manzer 404
13. **BERRY** - Carole Berry, Erin Berry, Ann Posch, Carol Forsythe 383
14. **LOSIER** - Robert Losier, Judy Losier, Beverly Losier, Peter Hare 312

Congratulations to all participants. The top three teams are eligible to represent Zone 1 in the National Final to be held in Saskatoon, Saskatchewan in June. The top qualifying team is subsidized by the Canadian Bridge Federation. ☺

---

## UNIT 194 ACE OF CLUBS AWARDS 1995

- |   |  |
|---|--|
| Rookie Master - Sharon Jefferson, Hfx       | NABC Master - Roy Landry, Hfx          |
| Junior Master - Jessie Sanford, Falmouth    | Life Master - Frank Starzomski, Syd.   |
| Club Master - Jim Jodrey, Amherst           | Bronze LM - Elizabeth Legacy, Syd.     |
| Sectional Master- Deirdre Davis, St. John's | Silver LM - Bill Knoll, Sr., New Glas. |
| Regional Master- Michael Inkpen, Kingston   | Gold I.M - Joe Currie, Halifax         |

# UPCOMING TOURNAMENTS

## FREDERICTON SECTIONAL TOURNAMENT

May 24-26, 1996 S9605058  
Keddys Inn and convention Centre  
Forest Hill Road, Fredericton, NB  
Tel: 1-506-454-4461

**Friday, May 24**  
2:00 Elm City Pairs  
Knockout Teams 1  
8:00 Stratified Pairs  
Knockout Teams 2  
11:59 Speedball KO Teams  
Knockout Teams 3

**Saturday, May 25**  
1:30 Stratified Pairs 1  
7:30 Stratified Pairs 2  
11:30 Speedball KO Teams

**Sunday, May 26**  
9:00 Stratified Swiss Teams \*  
(Playthrough)

Chairman: Sam Ghosh 506-472-4115  
Partnerships: Alice Manzer 506-454-3531

\* Lunch available in playing area between rounds 4 and 6.

## SOUTH SHORE SECTIONAL TOURNAMENT

June 7 - 9, 1996 S9606059  
Wandlyn Inn Motel, 50 North Street  
Bridgewater, NS. 1-800-561-0000  
Take Exit 12 off Highway 103

**Friday, June 7**  
2:00 Bridgewater Pairs  
Knockout Teams 1  
8:00 Stratified Pairs  
Knockout Teams 2  
11:59 Speedball KO Teams

**Saturday, June 8**  
1:30 Stratified Open Pairs 1  
7:30 Stratified Open Pairs 2  
11:30 Speedball KO Teams

**Sunday, June 9**  
9:00 Stratified Swiss Teams  
Playthrough - short break

Stratas: A = 0 - , B = 200 - 500, C = 0 - 200  
Tournament Chairperson & Partnerships  
Bob Chase 902-543-5350

Join us for a great weekend of that down home South Shore Hospitality!

## ST. JOHN'S, NEWFOUNDLAND SECTIONAL TOURNAMENT

St. John's Curling Club, July 26 - 28, 1996 S9607063

**Friday, July 26**  
2:00 pm St. John's Pairs  
Knockout Teams 1  
8:00 pm Stratified Pairs  
Knockout Teams 2  
11:59 pm Speedball KO Teams  
Knockout Teams 3

**Saturday, July 27**  
1:30 pm Stratified Open Pairs 1  
7:30 pm Stratified Open Pairs 2  
11:59 Speedball KO Teams

**Sunday, July 28**  
9:00 am Stratified Swiss Teams  
two-session playthrough

Tournament Chairman and Partnerships Jim Kirby 709-754-4733

Take a bridge holiday to the most fascinating Atlantic Province!

# DON COX MEMORIAL SECTIONAL RESULTS

Keddy's Motor Inn, Truro, NS

April 26 - 28, 1996

S9604012

## TIDAL BORE PAIRS 11 tables

- |   |      |
|---|------|
| 1/2. Joe Austin, Springhill - Lyn Leighton, Amherst | 99.5 |
| 1/2. Hedley Fulton - Donald Brown, Centreville, NS  | 99.5 |

## FRIDAY STRATIFIED PAIRS

### Flight A 20 tables

- |   |       |
|---|-------|
| 1. Carol Grover - Downey Grover, Avonport, NS | 150.5 |
| 2. Joe Currie - Pat LeBlanc, Halifax, NS      | 133   |

### Flight B 12 tables

- |   |       |
|---|-------|
| 1. Gerry Munt - Miroslaw Kolesiak, Saint John, NB | 130.5 |
|---|-------|

### Flight C 5 table

- |   |       |
|---|-------|
| 1. Benny Vaughn - Marcie Rogers, Yarmouth, NS | 107.5 |
|---|-------|

## FRIDAY ZIP KO TEAMS 10 teams

- |   |
|---|
| 1. Cyril Connolly - Eldon Mills - Suzanne Edwards - Peter Luard |
|---|

## KNOCKOUT TEAMS OF FOUR 11 teams

- |   |
|---|
| 1. Boyd Wells - Jo Ann Lynds - Carolyn MacDonald - Bill Knoll, Jr |
| 2. Norm O'Brien - Sandra Fox - Edgar Blinn - Ron MacDonald        |

## OPEN PAIRS

### Flight A 35 tables

- |   |        |
|---|--------|
| 1. Betsy Eisner, Truro - Joy Cavazzi, Kentville, NS | 391.01 |
| 2. Arthur Matheson - Leo Weniger, Halifax           | 386.54 |

### Flight B 20 tables

- |  |        |
|--|--------|
| 1. Jim Jodrey - Bob Brown, Amherst, NS | 367.67 |
| 2. Joe Austen - Lynfield Leighton      | 361.75 |

### Flight C 9 tables

- |                                 |        |
|---------------------------------|--------|
| 1. Hedley Fulton - Donald Brown | 321.79 |
|---------------------------------|--------|

## SWISS TEAMS Flight A 36 teams

- |  |     |
|--|-----|
| 1. Mark Spear - Bernie Britten - Carol Forsythe - Ann Posch    | 117 |
| 2. Bram Schwartz - Bob Baker - Vin Dohaney - Joe Currie        | 111 |
| 3. H. L. Stewart - John Stewart - Eric Balkam - Myrtle Moulton | 108 |
| 4. Gerry Soucy - Bryan Rapson - Virginia Giza - Elsie Adams    | 106 |

### Flight B 16 tables

- |  |    |
|--|----|
| 1. Jim Jodrey - Bob Brown - Evelyn Tower - Helen Lawrence, Amherst | 96 |
| 2. Kay Hagen - Stephen Boorne - Joe Austin - Lyn Leighton, Amherst | 88 |

### Flight C 7 tables

- |  |    |
|--|----|
| 1. Greg Homer - Tom Ball - Stuart Eastwood - Guy Turner, Halifax | 80 |
|--|----|



# CAN-AT '96

*"The Bluenose Regional"*

**June 26 - July 1, 1996**

**HOLIDAY INN • HALIFAX HARBOUR VIEW  
DARTMOUTH, NOVA SCOTIA  
CANADA**

- ♣ Game Times 1:30 & 8 pm Daily (exception: Monday, July 1 - Stratified & Senior Swiss Teams Start Time 10 am)
- ♥ Meet and Greet Daily Between 7 & 8 pm Harbourside Terrace Featuring Live Entertainment, Cash Bar
- ♠ Charity Game - Second Session Wednesday, June 26
- ♦ Novice Events - Side Games Friday, June 28 & Sunday, June 30, 8 pm
- ♣ Seniors Reception Saturday, June 29, 6-8 pm
- ♥ Trophy & Awards Presentation Sunday, June 30, 6-8 pm
- ♠ Holiday Inn Reservations Service 1-800-465-4329 (800-HOLIDAY)
- ♦ \$81.00 CDN Room Rate Available for Reservations Made Before May 31
- ♣ Airport Reception, Restaurant Guide, Tourist Information Services

| JUNE 26                                   |         | JUNE 29                                      |          |
|---|---------|--|----------|
| Stratified Pairs (2 sessions) .....       | 2:00 pm | Bracketed Knockout Teams .....               | 9:00 am  |
| International Fund Game .....             | 8:00 pm | StratiFlighted Swiss Teams                   |          |
| JUNE 27                                   |         | ("A" Strat=Board-A-Match) (2 sessions) ..... | 1:30 pm  |
| Bracketed Knockout Teams .....            | 9:00 am | Stratified Pairs (2 sessions) .....          | 1:30 pm  |
| Stratified Swiss Teams (2 sessions) ..... | 1:30 pm | Senior Knockout Teams (3rd & 4th) .....      | 1:30 pm  |
| Stratified Pairs (2 sessions) .....       | 1:30 pm | JUNE 30                                      |          |
| JUNE 28                                   |         | Bracketed Knockout Teams .....               | 9:00 am  |
| Bracketed Knockout Teams .....            | 9:00 am | Stratified Pairs (2 sessions) .....          | 1:30 pm  |
| Seniors Knockout Teams (2 sessions) ..... | 1:30 pm | Senior Pairs (2 sessions) .....              | 1:30 pm  |
| StratiFlighted Pairs (2 sessions) .....   | 1:30 pm | Novice Pairs (0-20 MPs) .....                | 8:00 pm  |
| New to Duplicate Pairs                    |         | JULY 1 - CANADA DAY                          |          |
| (Special Novice Game) .....               | 8:00 pm | Stratified Swiss Teams (Playthrough) .....   | 10:00 am |
|   |         | Senior Swiss Teams (Playthrough) .....       | 10:00 am |

**STRATIFICATION LIMITS**  
0-300, 300-1000, Unlimited

**Contact:**

**Greg Homer - Tournament Chairman**  
**Bill Halliday - Partnerships**  
**(902) 452-7583**

# NEWCASTLE, NB - KINGSTON, ONT. SPLIT REGIONAL

Royal Canadian Legion Building, Branch #10      Downtown Newcastle, NB

### Monday, August 19

Bracketed KO Teams Round 1 7:30pm  
United Fund Stratified Charity 7:30pm

### Tuesday, August 20

Bracketed KO Teams Round 2 9:00am  
Early Bird Continuous Pairs 9:00am  
Bracketed KO Rounds 3 & 4 1:30 & 7:30  
Stratified Women's Pairs 1:30 & 7:30  
Stratified Open Pairs 1:30 & 7:30

### Wednesday, August 21

Early Bird Continuous Pairs 9:00  
Bracketed KO Rounds 1 & 2 1:30 & 7:30  
Stratified Open Pairs 1:30 & 7:30  
Stratified Seniors Pairs 1:30 & 7:30

### Thursday, August 22

Early Bird Continuous Pairs 9:00  
Bracketed KO Teams Rd 3 1:30  
Bracketed KO Team Rd 4 7:30

### Thursday, August 22

Stratified Open Swiss 1:30 & 7:30  
Stratified Senior Swiss 1:30 & 7:30  
Stratified Zip KO Teams 11:30

### Friday, August 23

Early Bird Continuous Pairs 9:00  
Bracketed KO Rds 1 & 2 1:30-7:30  
Stratified Open Prs 1:30 - 7:30  
Stratified Senior Pairs 1:30 - 7:30  
Stratified Zip KO Teams 11:30

### Saturday, August 24

Early Bird Continuous Pairs 9:00  
Bracketed KO Rds 3 & 4 1:30 - 7:30  
Stratified Open Pairs 1:30 - 7:30  
Stratified Seniors Pairs 1:30 - 7:30  
Stratified Zip KO Teams 11:30

### Sunday, August 25

Stratified Playthru Swiss 10:30am  
Stratified Senior Swiss 10:30am

### Accommodations

|                      |                |
|----------------------|----------------|
| Wandlyn Inn          | 1-506-622-3870 |
| Comfort Inn          | 1-800-228-5150 |
| Country Inn & Suites | 1-506-627-1999 |
| Wharf Inn            | 1-800-561-2111 |
| Fundy Line Motel     | 1-506-622-3650 |

### Tournament Co-Chairladies:

|                  |              |
|------------------|--------------|
| Margie Bawn      | 506-622-7743 |
| Shirley Matchett | 506-622-7648 |

### Partnerships:

|            |              |
|------------|--------------|
| Ron Doucet | 506-773-6180 |
| Rob McCosh | 506-773-9876 |

Players must be at least 55 years of age in order to play in Senior events.



|   |   |   |
|---|---|---|
| May 9 (Thurs)<br>May 24 - 26  | International Fund Game #2<br><b>FREDERICTON SECTIONAL</b>  | Clubs<br>Fredericton, NB  |
| Jun 1 - Aug 31<br>Jun 3 - 8<br>Jun 6 - 8<br>Jun 7 - 9<br>Jun 26 - Jul 1 | NAOP Flts A, B, and NLM Qualifying<br>CNTC National Final<br>COPC National Final<br><b>SOUTH SHORE Sectional</b><br><b>CAN-AT REGIONAL</b>      | Clubs<br>Saskatoon, SK<br>Saskatoon, SK<br><b>Bridgewater, NS</b><br><b>Dartmouth, NS</b> |
| Jul 2 - 6<br>Jul 26 - 28  | <b>CWTC NATIONAL FINALS</b><br><b>ST. JOHN'S Sectional</b>  | <b>Fredericton, NB</b><br><b>St. John's, NF</b>   |
| Aug 2 (Fri)<br>Aug 19 - 25  | International Fund Game #3<br><b>DISTRICT 1 SPLIT REGIONAL</b>  | Clubs<br>Newcastle, NB  |
| Sep 1 - 30<br>Sep 19 (Thurs)<br>Sep 21 (1:30 pm)<br>Sep 27 - 29         | North American 49er Pairs Qualifying<br>ACBL Instant Matchpoint Game<br>NAOP Unit 194 Finals (Strat A,B,C)<br><b>ANNAPOLIS VALLEY Sectional</b> | Clubs<br>Clubs<br>Halifax, Sydney<br><b>Windsor, NS</b>                                   |
| Oct 22 (Mon)<br>Oct 25 - 27   | Canada-Wide International Fund Game<br><b>SPUD ISLAND Sectional</b>   | Clubs<br><b>Charlottetown, PE</b>   |
| Nov 15 - 17<br>Nov 25 (Mon)   | <b>HALIFAX FALL SECTIONAL</b><br>ACBI Charity Game  | <b>Halifax, NS</b><br>Clubs   |

\* Dates are tentative. Please check with your Unit Coordinator or club manager before making travel arrangements. Book accommodations early to avoid disappointment.

## UNIT 194 TROPHY RACES DISCUSSED

The Canadian Maritime Unit 194 executive discussed a motion to present the Lagan Trophy to the male winning the most master points at sectionals rather than the person as the McLeod Trophy is awarded to the lady who wins the most points.

It was decided that the Lagan Trophy continue to be awarded to the player who receives the most points while the McLeod Trophy will continue to be awarded to the lady winning the most points.

Free entries to sectional tournaments (except at STAC events) will be awarded to the male player and the female player winning the most master points at sectionals. In the event that two males or two females tie for the highest total, the players share the free entries with only one free entry awarded in any one playing session.

# Kings Korner:

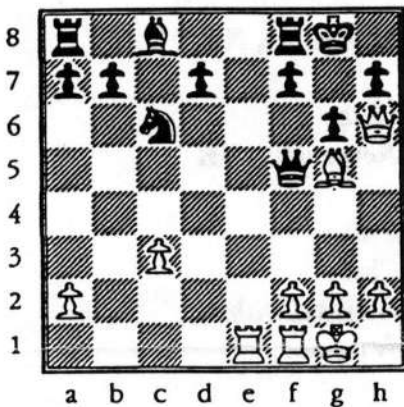
## No 7

by: Parker MacDonald

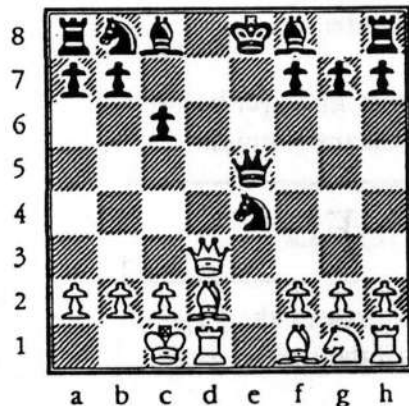
Solution to previous problems:

Beginner's: 1. E×a7+ ♖×a7 2. Eal++

Advanced: 1. ♔e1+ ♖g1 2. ♖h1+ ♖×h1  
3. Efl++



BEGINNER'S PROBLEM  
WHITE TO MOVE AND MATE IN 3



ADVANCED PROBLEM  
BLACK TO MOVE AND MATE IN 3

# PUZZLE PAGE

## ON THE HIGH SEAS

A privateer discovers a merchantman 10 miles to leeward at 11:45 am and with a good breeze bears down upon her at 11 mph, while the merchantman can only make 8 mph in her attempt to escape. After a two hour chase, the top sail of the privateer is carried away. She can now only make 17 mph while the privateer makes 15.

At what time will the privateer overtake the merchantman?

\*\*\*\*\*

## TRACK STARS

Allen can run around a circular track in 40 seconds. His friend and running mate Bob runs around in the opposite direction and meets Allen every 15 seconds.

How many seconds does it take Bob to run around the track?

\*\*\*\*\*

## THE SHAKES

A total of twenty eight hand shakes were exchanged at the conclusion of a party.

Assuming that each participant was equally polite toward all the others, how many people attended the party?

## Solution to last issue's problems:

### Participation

Let f, b, d be the number of hours, respectively, that the car travels forward, back to pick up Dick, then forward to the destination. Then we may write:  
 $25f - 25b - 25d = 100$  for the car  
 $5f + 5b + 25d = 100$  for Dick  
 $25f + 5b + 5d = 100$  for Harry

This system of simultaneous equations is equivalent to the system  
 $f - b + d = 4$   
 $f + b + 5d = 20$   
 $5f + b + d = 20$

whose solution is  $f = 3, b = 2, d = 3$   
Hence,  $f + b + d = 8 =$  total hours.

### Vacation Blues

Let a = rainy mornings and rainy afternoons  
b = Non-rainy mornings and rainy afternoons  
c = rainy mornings and non-rainy afternoons  
e = non-rainy mornings and non-rainy afternoons

then  $d = a + b + c + e,$   
 $a + b + c = 7, a = 0, c + e = 5$   
 $b + e = 6$  therefore  $e = 2$  and  $d = 9.$

### Vowel-less

A Warning from Mother (Goose)  
**JACK BE NIMBLE, JACK BE QUICK, FOR THE LIGHT HAS CHANGED AND THE ROAD IS SLICK.**

## MARCHING ALONG

Each of the following words contain MAR. Use the definitions to fill in the blanks.

1. More insane MA \_ \_ \_ R.
2. A shopping area  
MAR \_ \_ \_ \_ \_
3. Scanty M \_ A \_ \_ R
4. One part of a space that has been divided.  
\_ \_ M \_ AR \_ \_ \_ \_